



# EL8000-MCS

## Edgeline series of rugged cases

6U MilSpec Rugged Enclosure with integrated wheels and tow handle

### Overview

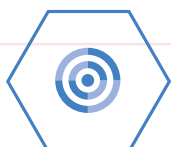
The ultimate in protection for the HPE Edgeline EL8000 Converged Edge Server System and related mission critical components. The structural rigidity of the stackable case eliminates distortion resulting from high temperature exposure. The two 2" interchangeable lids with ¼ turn latches replace mismatched rack-mount lids and knuckle busting latches, while creating a watertight fit. Each case comes standard with integrated wheels and a sturdy towing handle. Additional optional accessories are shown on page 2, to include rail kits for switches, accessory drawers and an uninterruptible power supply (UPS).

Taking the Edgeline EL8000 into extreme environmental and operational conditions is now possible; a viable solution for Military, Federal, and Commercial sectors. The EL8000-MCS from UltraLife was custom designed to support the Edgeline EL8000 Converged Server System and enables edge computing in the most austere environments and locations.

### Features

- ▶ **Designed for HPE Edgeline EL8000 Converged Servers**
- ▶ **9.5" Half Rack Mount aluminum case**
- ▶ **Protection class IP 65 through seam-welded housing and lid with peripheral seal**
- ▶ **Impervious to elements: Case withstands temperature range of -238° to 302° F; UV, water, weather and corrosion resistance**
- ▶ **Shock and vibration dampened**

Follow Us Online:



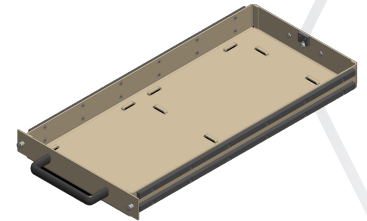
Uninterruptible Power  
Supply  
SKU: R7S06A



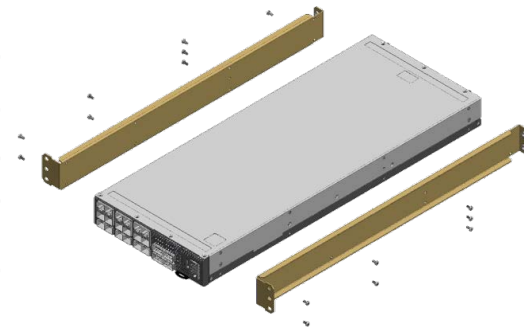
**EL8000-MCS Specifications**

HPE PN /Color:	R4D12A - Ultralife EL8000-MCS-T / Tan
	R6Q36A - Ultralife EL8000-MCS-G / Gray
	R6Q37A - Ultralife EL8000-MCS-Z / Clear Coat Zinc
Size H x W X L (inches):	16.87 x 14.69 x 27.13 Six Rack Units (6U)
Weight:	43 lbs.
Standards:	MilStd-810G, MilStd-295, DIN EN 60529
	MilStd-461, IEC 34-5/529
Temperature Range:	-238° to 302° F (Case Only)

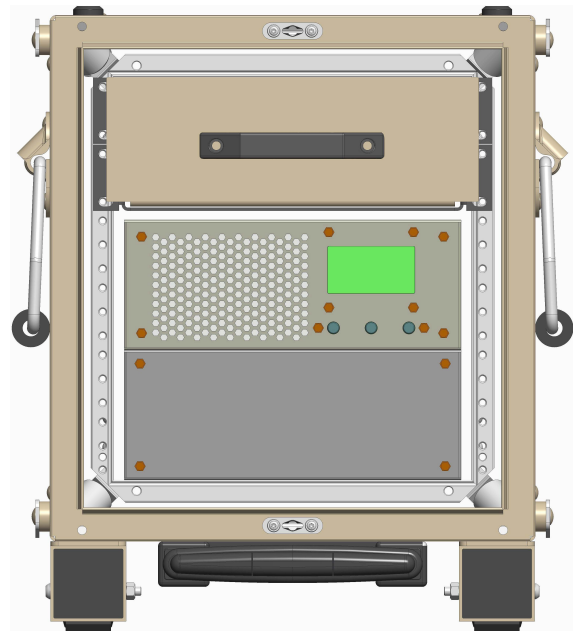
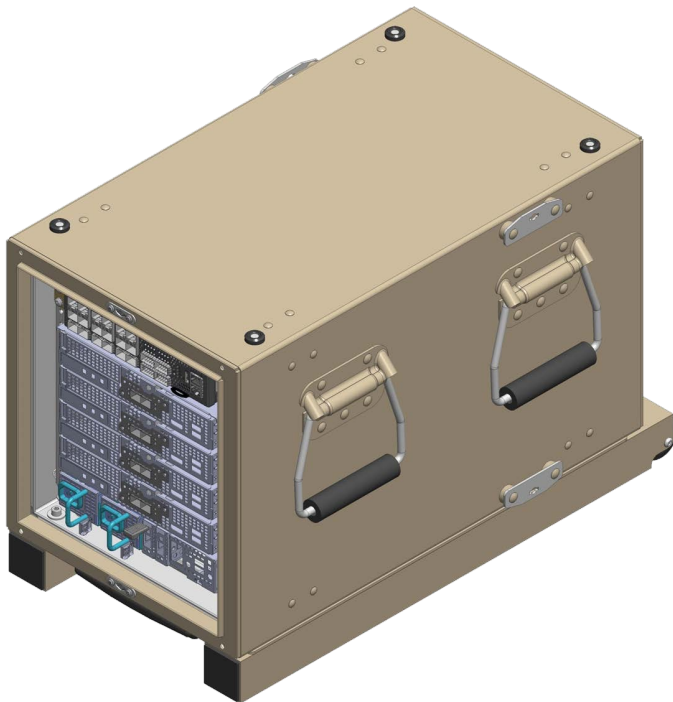
Accessory Drawer Kit  
SKU: R8F31A



HPE StoreFabric Switch SKU:  
R0P78A  
Rail Mounting Kit SKU: R6T79A



Finish:	<ul style="list-style-type: none"> <li>• Paint - RAL-STD</li> <li>• Clear anodized</li> <li>• Stenciling and silk screening available</li> </ul>
Material	Aluminum
	Integrated wheels and tow handle
General:	High strength to weight ratio
	100% Recyclable



www.hpe.com/edgeline  
www.ultralifecorporation.com/commsys

Follow Us Online:

