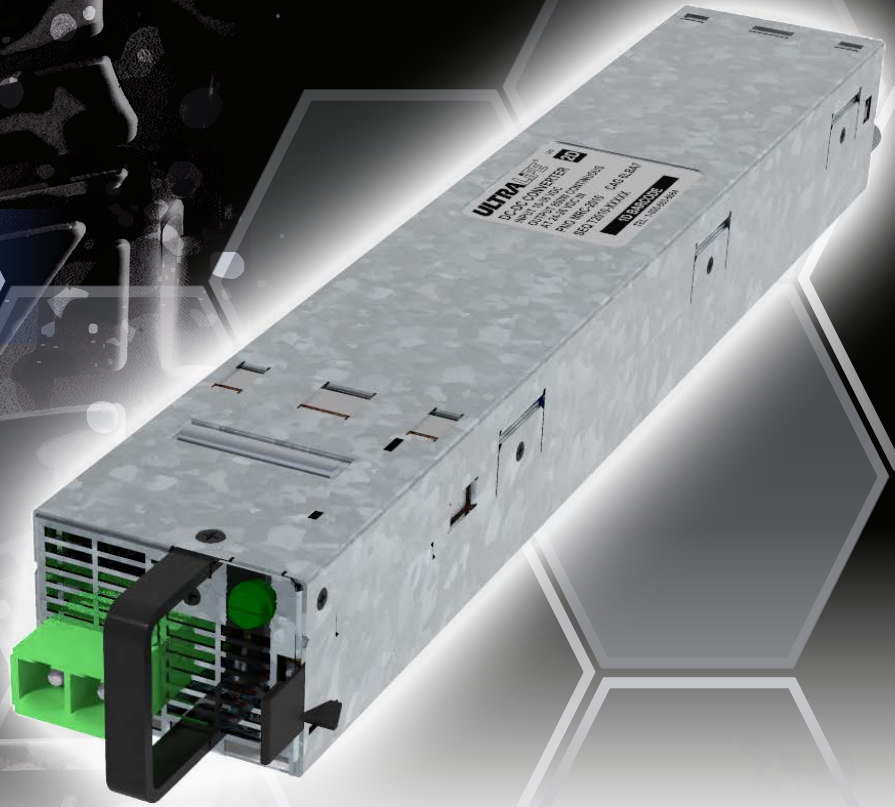


## **EL8000-PS** 10-36 VDC 800 Watt Power Supply



### **Overview**

The EL8000-PS is a 10-36 VDC 800-watt power supply supporting the HPE EL8000 series servers.

A simple and direct swap for existing AC and Telco -48VDC power supplies, the EL8000-PS is a real enabler to get the best compute resources available on the move in land, water and aviation platforms where AC power is not available.

A simple wiring harness is included with each power supply making installation quick and easy.

### **Features**

- ▶ **10-36VDC input power range**
- ▶ **800-watts total power available**
- ▶ **Reverse polarity protected**
- ▶ **Embedded fans for cooling**
- ▶ **Mil-Std 461 qualified for EMI**
- ▶ **Various Mil-Std 810 environmental qualifications**
- ▶ **Mil-Std-1275 for spike & surge qualification**
- ▶ **~94% efficiency @ 800W output**
- ▶ **Fast & easy hot-plug access**



[www.ultralifecorporation.com/commsys](http://www.ultralifecorporation.com/commsys)  
800-332-5000 | [orders@ulbi.com](mailto:orders@ulbi.com)

Follow Us Online:

