

UBI-2590SF / Short Format Dual Voltage

Technical Datasheet



Features

- Flexible dual mode output voltage
- SmartCircuit Technology - communication with host and charge equipment
- Accurate state-of-charge display for each side of the battery
- Rugged, military tough case construction can handle severe environments
- High energy density solution in the Ultralife

Applications

- Rugged, portable electronics
- Robotics / AUVs / UUVs
- Military communication devices
- AN/PRC-117G, AN/PRC-117F, AN/PRC-119, AN/PSC-5D

Optional Accessories

- CA0003: Vehicle Adapter
- CA0006: Series configuration, 2 conductor cable
- CA0007: Parallel configuration, 2 conductor cable
- CA0008: Independent configuration, 4 conductor cable
- CH0014: 12V Desktop Charger
- MRC-135A: Single Unit Solar Charger
- MRC-143A: 3-Unit Solar Charger
- UCA0039: Shielded Smart Cable
- UCA0114: Low Profile Smart Cable
- UCH0053: 6-bay Smart Charger
- UCH0054: 2-bay Smart Charger
- UCH0057: Smart Desktop Charger

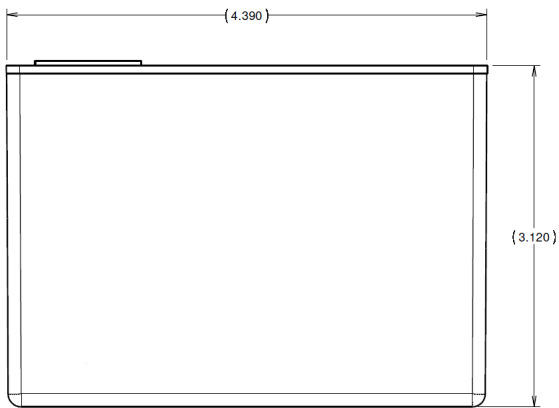
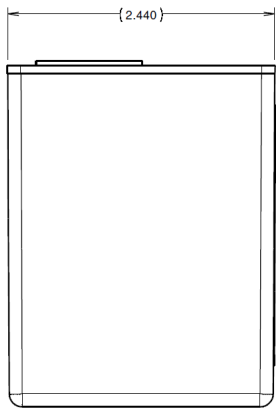
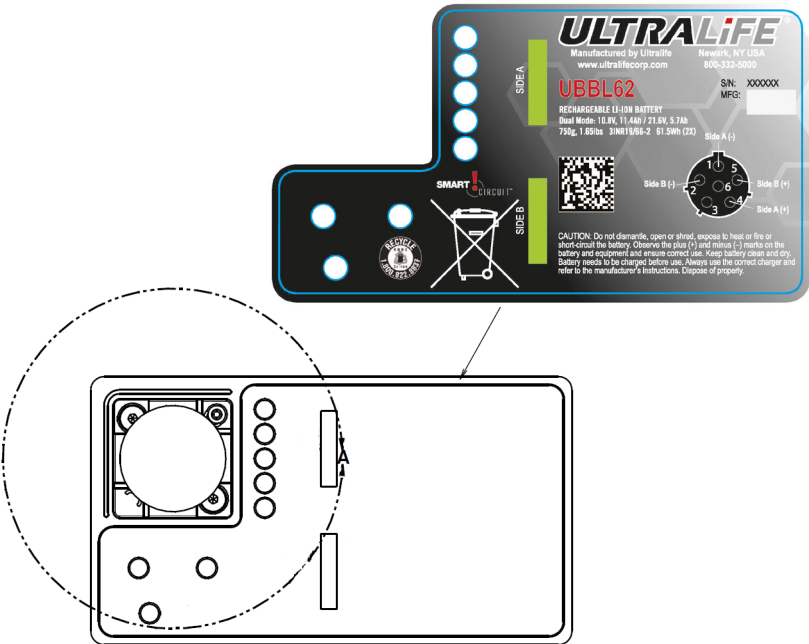
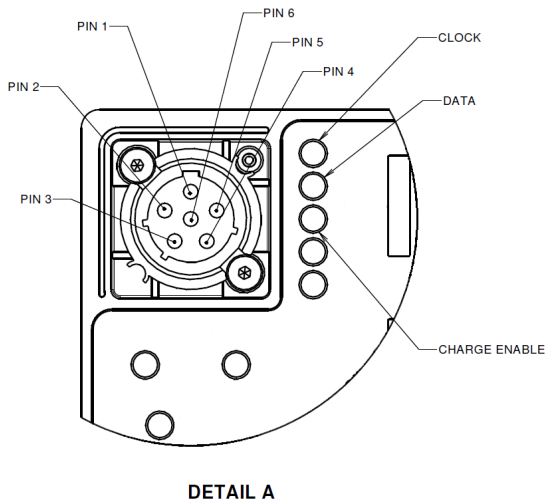
Technical Specifications

Part No.	UBBL62	
NSN	TBD	
Voltage Range	24V Mode:	15.0V to 25.2V
	12V Mode:	7.5V to 12.6V
Nominal Voltage	24V Mode:	21.6V
	12V Mode:	10.8V
Capacity¹	Typical Capacity:	24V Mode: 5.7Ah
		12V Mode: 11.4Ah
	Minimal:	24V Mode: 5.5Ah
		12V Mode: 10.9Ah
Max. Continuous Discharge	24V Mode: 8.0A; 12V Mode: 16.0A	
Max. Pulse Discharge²	24V Mode: 13.0A; 12V Mode: 26.0A	
Energy Rating	123Wh (2x 61.5Wh)	
Energy Density	Gravimetric: 167Wh/kg; Volumetric: 228Wh/L	
Weight	750g, 1.65lbs	
Cycle Life³	>300 cycles	
Operating Temperature	-32°C to +60°C discharging; -20°C to +50°C charging	
Storage Temperature	-20°C to +50°C	
Self-Discharge	< 5% per month	
Exterior/Housing	Hard plastic, black (Noryl N190X-701)	
Terminals/Connector	Connector SC-C-179495	
Communications	Physical Layer:	SMBus v1.1
	Protocol:	SBD v1.1 compliant
State of Charge Indicator	5-segment LCD display (both sections)	
Certifications	IEC 62133:2012 (CB ref. pending)	
	UN 38.3	
Protection	Over Voltage:	4.30V (per cell)
	Under Voltage:	2.40V (per cell)
	Transient Currents:	23.0A > 15ms; 30.0A > 305us
	Short Circuit	
	Overcharge Protection: Up to 40V	
	Thermal Cutoff Device: Activates 70±5°C; Resets 50±5°C	
Charging	Thermal Fuse: Activates 93±5°C	
	Connect each side of the battery to a DC power source using correct polarity and apply a maximum voltage of 12.6V. Limit the current to the recommended rate of 2.0A and hold to 12.6V until the current declines to 300mA. Maximum charge rate is 4.0A.	
Safety	Material Safety Datasheet - MSDS041 Safety Guide UBM-5112	
Transportation	UN 3480 Dangerous Goods Class 9, 2 separate batteries at 61.5Wh <100Wh If packed in or with equipment (UN 3481), contact Ultralife for guidance or other questions. UN Testing Summary - UNTS-0200	
Harmonized Tariff Schedule	8507.60.0020	

Notes

1. Using a C/5 discharge rate at +25°C.
2. Load has a pulse width of 5 seconds with a total period of 30 seconds.
3. Number of consecutive C/5 rate discharges while in 24V mode and recommended charges of 25±5°C until the battery reaches 80% of initial capacity.

Dimensions



Performance Graphs

